

## Solder, Rotolock



Manual stem service valves are typically installed in systems to isolate circuits or critical system components, thereby allowing access to the refrigeration system for repair purposes while safely assuring no loss of refrigerant. Valves in this product category can have many different body styles including forged brass and cast iron versions that mount directly on compressors, as well as angle style in solder and rotolock configurations that can mount in circuits, lines, or on adapter fittings.

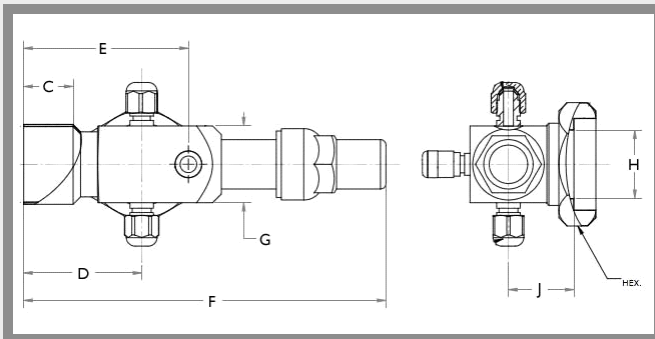
The Steel Isolation Valve series (SIV) have been designed for ultimate flexibility and performance in any system. The unique design starts with a flexible 3-gauge port configuration allowing easy access to any service port no matter where the valve is mounted in the system. Each valve has dual ports on either side of the valve which remain open during normal operation and can be used with pressure switches or gauges as required for system operation or service purposes. The top service port is the furthest back of all ports, and is completely isolated when the stem is fully back-seated. This port can be used for pressure readings or charging/evacuation when slightly cracked from the back-seat.

Valves may be further customized to any design requirement by identifying individual ports that should be permanently sealed using the special locked brass seal cap option that protects ports from unwanted tampering and potential leaks.

All valve bodies are specially plated to maximize protection against rust while also offering unique solid copper connections that allow for easy and quick installation.

### Features:

- Maximum working pressure (PS): 700 psig, 48 bar
- Working temperature range (TS): -40°F/300°F, -40°C/149°C
- Compatible with all CFC, HCFC and HFC refrigerants and oils
- No flow restrictions to the attached relief valve circuit
- Full isolation of relief valve circuit for maintenance or replacement
- Various connections available
- Multiple cap options
- Tamper-proof wire lock



\* Part Number requires a 5 character prefix

Example: IBXPP10012 = 5/8 x 1-14UNS-2B, Top port not required (plugged). Left and Right ports are required.

Prefix References	
Character 1 (Valve Type)	
I	Isolation
Character 2 (size)	
A	3/4" - 16 UNF
B	1" - 14 UNS
C	1 1/4" - 12 UNF
D	1 1/2" - 12 UNF
E	1 3/4" - 12 UNF
F	2 1/4" - 12 UNF
G	3/8" ODS
H	1/2" ODS
J	5/8" ODS
K	3/4" ODS
L	7/8" ODS
M	1 1/8" ODS
N	1 3/8" ODS
O	1 5/8" ODS
Character 3 (Top Port)	
P	Access Port Required
X	Access Port Not Required
Character 4 (Left Port)	
P	Access Port Required
X	Access Port Not Required
Character 5 (Right Port)	
P	Access Port Required
X	Access Port Not Required

Part Number*	Size	C		D		E		F		G		H		J		Hex		Wt	
		in	mm	in	mm	in	mm	in	mm	in	mm	in	mm	in	mm	in	lb	kg	
I 10010	3/8	0.32	8	1.46	37	1.97	50	4.39	112	0.79	20	.47	12	0.75	19	1.18	0.55	0.25	
I 10011	1/2	0.41	10	1.53	39	2.04	52	4.40	112	0.79	20	.47	12	0.75	19	1.18	0.54	0.24	
I 10012	5/8	0.63	16	1.58	40	2.09	53	4.65	118	0.87	22	.51	13	0.79	20	1.18	0.61	0.28	
I 10014	7/8	0.79	20	2.11	54	2.77	70	5.75	146	1.18	30	.75	19	1.05	27	1.42	1.07	0.49	
I 10015	1 1/8	0.95	24	2.85	72	3.76	96	7.62	194	1.42	36	.75	19	1.17	30	1.42	1.77	0.80	
I 10016	1 3/8	0.98	25	3.11	79	4.01	102	7.90	201	1.42	36	.75	19	1.17	30	1.42	1.76	0.80	
I 10017	1 5/8	1.10	28	3.36	85	4.27	108	8.15	207	1.42	36	1.06	27	1.22	31	1.97	1.98	0.90	